

Cytokeratin 6 Recombinant antibody

Cat:B32054R

Company: Haokebio

Uniprot ID:P48668

Applications: IHC:1:100-1:200

Organism:Rabbit

IHC-Polymer:1:400-1:800

Species reactivity:Human

TSA:1:500-1:1000

Background:

CK6 is an epithelial-specific type I keratin that is typically associated with post-traumatic keratinocyte activation, and is therefore also regarded as a type of healing factor. However, it is not related to the proliferation or metastasis of keratinocytes. This protein always occurs in pairs with the type I keratin CK16. CK6 is usually expressed in the basal layer cells of non-keratinized epithelial tissues, and also shows significant expression in the outer root sheath of hair follicles. In tumor tissues, CK6 is expressed in most squamous cell carcinomas, especially in the intermediate mature cell layer of squamous cell carcinoma nests. CK6 is usually used in combination with CK5 for the differential diagnosis of mesothelioma.

Protein full name:

keratin 6A

Synonyms:

Cytokeratin 6, KRT6A, CK-6D, CK-6A, CK6A

Immunogen:

Peptide

Isotype:

IgG

Subcellular location:

Cytoplasm

Purity:

Affinity purification

Form:

Liquid

Storage Buffer:

PBS with 0.02% sodium azide, 100 µg/ml BSA and 50% glycerol.

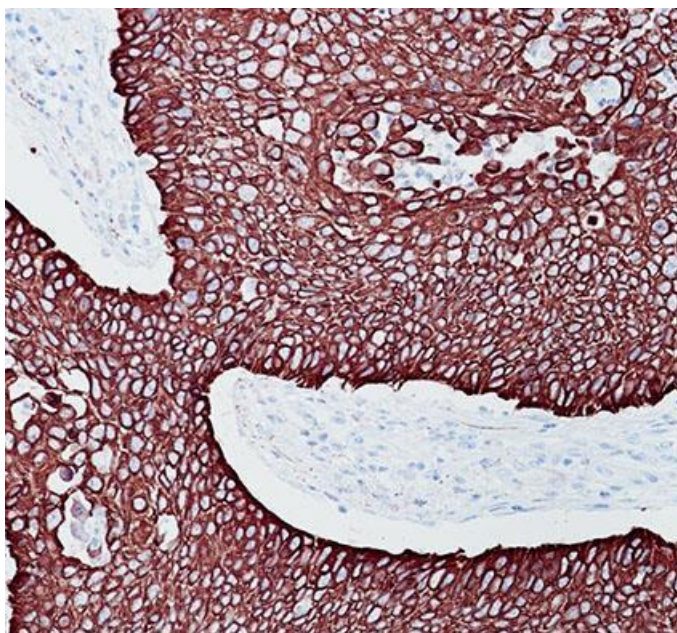
Storage:

Store at -20 °C for one year.

Experimental procedure:

Antigen retrieval: Citrate buffer (pH 9.0) , Medium high heat for 8 minutes, stop for 7 minutes, medium high heat for 8 minutes. Incubate antibody, 4°C overnight. Secondary antibody: Poly-HRP Goat Anti-Rabbit & Mouse Universal Secondary Antibody, RT, 1h.

Images:



Sample: Human esophageal cancer tissue, 4% PFA 12-24h

Source of Reagents:

发表[中文论文]请标注:Cytokeratin 6(B32054R)由杭州浩克生物技术有限公司提供;

发表[英文论文]请标注:Cytokeratin 6(B32054R) were kindly provided by Hangzhou Haoke Biotechnology Co., Ltd.