

## MMP13 Recombinant antibody

**Cat:** B13005R

**Company:** HaoKebio

**Uniprot ID:** P45452

**Applications:** IHC:1:200-1:2000

**Organism:** Rabbit

IHC-Polymer:1:800-1:8000

**Species reactivity:** Human Mouse Rat

IHC-TSA:1:1000-1:10000

IF:1:50-1:100

**Background:**

This gene encodes a member of the peptidase M10 family of matrix metalloproteinases (MMPs). Proteins in this family are involved in the breakdown of extracellular matrix in normal physiological processes, such as embryonic development, reproduction, and tissue remodeling, as well as in disease processes, such as arthritis and metastasis.

The encoded preproprotein is proteolytically processed to generate the mature protease. This protease cleaves type II collagen more efficiently than types I and III. It may be involved in articular cartilage turnover and cartilage pathophysiology associated with osteoarthritis. Mutations in this gene are associated with metaphyseal dysplasia.

This gene is part of a cluster of MMP genes on chromosome 11.

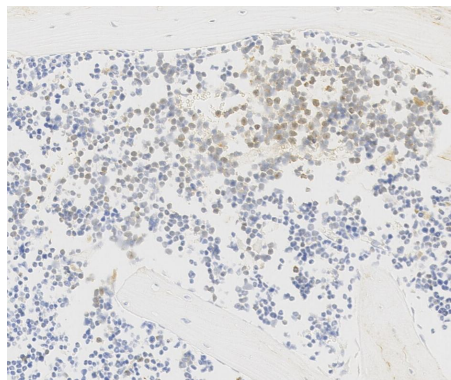
PBS with 0.02% sodium azide, 100 µg/ml BSA and 50% glycerol.

**Storage:**

Store at -20 °C for one year.

**Experimental procedure:**

Antigen retrieval: Citrate buffer (pH 9.0), Medium high heat for 8 minutes, stop for 7 minutes, medium high heat for 8 minutes. Incubate antibody, 4°C overnight. Secondary antibody: Poly-HRP Goat Anti-Rabbit & Mouse Universal Secondary Antibody, RT, 1h.

**Images:**


Sample: Mouse bone, 4% PFA 12-24h

**Protein full name:**

matrix metalloproteinase 13

**Synonyms:**

CLG3, Collagenase 3, EC:3.4.24.-, Matrix metalloproteinase 13, Matrix metalloproteinase-13

**Immunogen:**

Recombinant protein

**Isotype:**

IgG

**Subcellular location:**

Cytoplasm

**Purity:**

Affinity purification

**Form:**

Liquid

**Storage Buffer:**
**Source of Reagents:**

发表[中文论文]请标注:MMP13(B13005R)由杭州浩克生物技术有限公司提供;

发表[英文论文]请标注:MMP13(B13005R) were kindly provided by Hangzhou Haoke Biotechnology Co., Ltd.