

WT1 Recombinant antibody

Cat:B32051R

Company: Haokebio

Uniprot ID:P19544

Applications: IHC:1:100-1:200

Organism:Rabbit

IHC-Polymer:1:400-1:800

Species reactivity:Human

TSA:1:500-1:1000

Background:

The WT1 gene is located on chromosome 11p13. As a transcription factor, it plays an important role in the development of the genitourinary system. There are at least 8 different isoforms, with associated molecular weights ranging from 52 kDa to 62 kDa, which are generated through alternative RNA splicing. WT1 initially exists as an inactive protein in the cytoplasm; after being activated by phosphorylation, it translocates to the nucleus. WT1 influences cell proliferation by inhibiting bcl-2 and regulating cadherins and p53. In normal epithelial cells, WT1 is mainly expressed in fallopian tube and ovarian surface epithelial cells, but not in endometrial or cervical epithelium. In non-epithelial cells, WT1 is expressed in mesothelial stromal cells, stromal cells of the female reproductive tract, non-germ cells of the testis, and renal podocytes. In tumor tissues, WT1 is primarily expressed in Wilms' tumor and mesothelioma, and is also expressed in serous ovarian carcinoma and some breast cancers. Clinically, WT1 can be used to distinguish malignant mesothelioma from serous ovarian carcinoma.

Protein full name:

Wilms tumor 1

Synonyms:

2J13, Wilms tumor 1, Wilms tumor protein

Immunogen:

Peptide

Isotype:

IgG

Subcellular location:

Nucleus

Purity:

Affinity purification

Form:

Liquid

Storage Buffer:

PBS with 0.02% sodium azide, 100 µg/ml BSA and 50% glycerol.

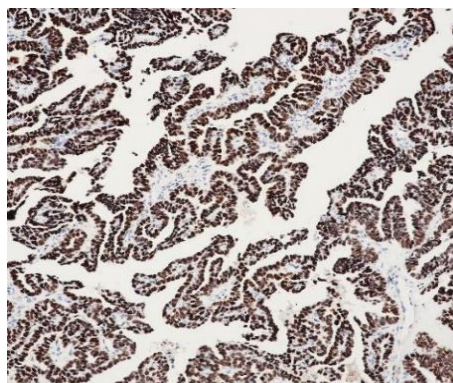
Storage:

Store at -20 °C for one year.

Experimental procedure:

Antigen retrieval: Citrate buffer (pH 9.0), Medium high heat for 8 minutes, stop for 7 minutes, medium high heat for 8 minutes. Incubate antibody, 4°C overnight. Secondary antibody: Poly-HRP Goat Anti-Rabbit & Mouse Universal Secondary Antibody, RT, 1h.

Images:



Sample: Human ovarian cancer tissue, 4% PFA 12-24h

Source of Reagents:

发表[中文论文]请标注:WT1(B32051R)由杭州浩克生物技术有限公司提供;

发表[英文论文]请标注:WT1(B32051R) were kindly provided by Hangzhou Haoke Biotechnology Co., Ltd.