

CD10 Recombinant antibody

Cat:B32048R
Company: Haokebio

Uniprot ID:P08473

Applications: IHC:1:100-1:200

Organism:Rabbit

IHC-Polymer:1:400-1:800

Species reactivity:Human

TSA:1:500-1:1000

Background:

CD10, also known as Common Acute Lymphoblastic Leukemia Antigen (CALLA), is expressed in bone marrow hematopoietic stem cells (including neutrophils), follicular centroblasts, a small number of mature B lymphocytes, and perifollicular T lymphocytes. Additionally, CD10 has been found to be expressed in upper intestinal brush border cells, bile canaliculi of the liver, glomerular and renal tubular cells, alveolar cells, myoepithelial cells, cells of the mammary gland, sweat gland, salivary gland, and prostate, as well as a small number of fibroblasts. It is expressed in the majority of cases of acute lymphoblastic leukemia, follicular lymphoma, and Burkitt's lymphoma. CD10 can be specifically used for the identification and classification of B-cell leukemia/lymphoma and other tumors such as hepatocellular carcinoma and renal cell carcinoma.

Protein full name:

membrane metallo-endoropeptidase

Synonyms:

MME, Neprilysin, 4B9D9, Atriopeptidase, CALLA

Immunogen:

Peptide

Isotype:

IgG

Subcellular location:

Cell membrane

Purity:

Affinity purification

Form:

Liquid

Storage Buffer:

PBS with 0.02% sodium azide, 100 µg/ml BSA and 50% glycerol.

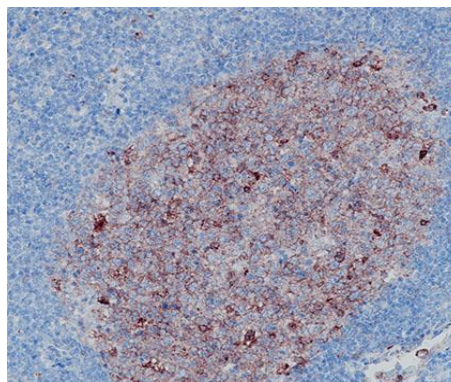
Storage:

Store at -20 °C for one year.

Experimental procedure:

Antigen retrieval: Citrate buffer (pH 9.0), Medium high heat for 8 minutes, stop for 7 minutes, medium high heat for 8 minutes. Incubate antibody, 4°C overnight. Secondary antibody: Poly-HRP Goat Anti-Rabbit & Mouse Universal Secondary Antibody, RT, 1h.

Images:



Sample: Human tonsil tissue, 4% PFA 12-24h

Source of Reagents:

发表[中文论文]请标注:CD10(B32048R)由杭州浩克生物技术有限公司提供;

发表[英文论文]请标注:CD10(B32048R) were kindly provided by Hangzhou Haoke Biotechnology Co., Ltd.