

Cytokeratin 10 Recombinant antibody

Cat:B32046R

Company: Haokebio

Uniprot ID:P13645

Applications: IHC:1:100-1:200

Organism:Rabbit

IHC-Polymer:1:400-1:800

Species reactivity:Human

TSA:1:500-1:1000

Background:

CK10 is a type I keratin and an intermediate filament protein. It can specifically block the proliferation process of keratinocytes. CK10 is usually expressed in suprabasal cells and granular layer cells of the epithelium, as well as in squamous epithelium. Additionally, it is expressed in sweat glands and ducts and sebaceous gland cells. CK10 expression is associated with the degree of squamous cell differentiation: cells with low expression are generally poorly differentiated. It has been reported that the expression rate of CK10 is approximately 50% in oral and pharyngeal squamous cell carcinomas. CK10 can be used to distinguish between Paget's disease (negative expression) and basal cell carcinoma and squamous cell carcinoma (positive expression).

Protein full name:

keratin 10

Synonyms:

KRT10, CK 10, CK10, CK-10, Cytokeratin, Keratin

Immunogen:

Peptide

Isotype:

IgG

Subcellular location:

Cytoplasm

Purity:

Affinity purification

Form:

Liquid

Storage Buffer:

PBS with 0.02% sodium azide, 100 µg/ml BSA and 50% glycerol.

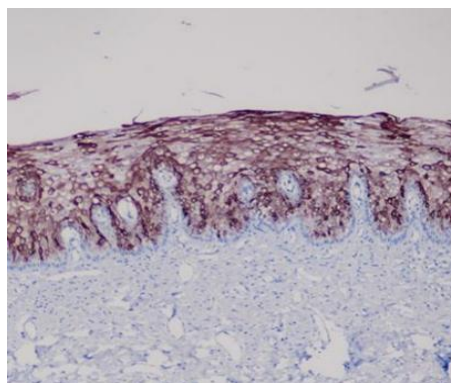
Storage:

Store at -20 °C for one year.

Experimental procedure:

Antigen retrieval: Citrate buffer (pH 9.0), Medium high heat for 8 minutes, stop for 7 minutes, medium high heat for 8 minutes. Incubate antibody, 4°C overnight. Secondary antibody: Poly-HRP Goat Anti-Rabbit & Mouse Universal Secondary Antibody, RT, 1h.

Images:



Sample: Human cervix tissue, 4% PFA 12-24h

Source of Reagents:

发表[中文论文]请标注:Cytokeratin 10(B32046R)由杭州浩克生物技术有限公司提供;

发表[英文论文]请标注:Cytokeratin 10(B32046R) were kindly provided by Hangzhou Haoke Biotechnology Co., Ltd.