

## EPCAM Recombinant antibody

**Cat:B32045R**
**Company:** Haokebio

**Uniprot ID:**P16422

**Applications:** IHC:1:100-1:200

**Organism:**Rabbit

IHC-Polymer:1:400-1:800

**Species reactivity:**Human

TSA:1:500-1:1000

### Background:

EpCAM (Epithelial Cell Adhesion Molecule) is a transmembrane glycoprotein that acts as a homophilic receptor interaction molecule between intestinal epithelial cells (IECs) and intraepithelial lymphocytes (IELs), serving as the first line of the immune barrier against mucosal infections. It plays a crucial role in the proliferation and differentiation of embryonic stem cells and can also upregulate the expression of FABP5, MYC, and cyclins A and E. This glycoprotein is located on the cell membrane surface (preferentially in basal cells) and in the cytoplasm of nearly all epithelial cells, except for most squamous epithelial cells, hepatocytes, renal proximal tubular cells, gastric parietal cells, and myoepithelial cells. However, positive expression can be observed in the basal layer of squamous epithelial cells derived from the endoderm (e.g., palatine tonsils) and mesoderm (e.g., uterus). Normal mesothelial cells are EpCAM-negative, but they may exhibit focal expression when reactive changes occur. EpCAM is detectable in most epithelial tumors, whereas most non-epithelial tumors do not show EpCAM expression. When used in combination with other markers, EpCAM can serve as an auxiliary tool to determine the epithelial origin of tumors, such as distinguishing between lung adenocarcinoma and mesothelioma.

### Protein full name:

epithelial cell adhesion molecule

### Synonyms:

EPCAM, EGP, CO17 1A, CO 17A, Cell surface glycoprotein Trop-1

### Immunogen:

Peptide

### Isotype:

IgG

### Subcellular location:

Cell membrane

### Purity:

Affinity purification

### Form:

Liquid

### Storage Buffer:

PBS with 0.02% sodium azide, 100 µg/ml BSA and 50% glycerol.

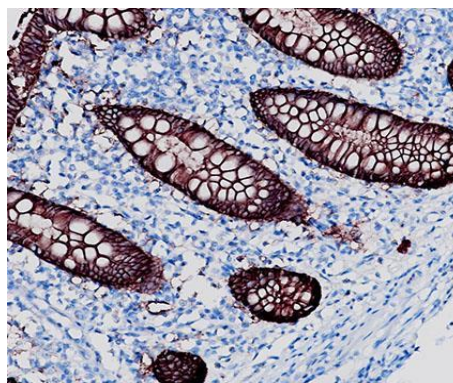
### Storage:

Store at -20 °C for one year.

### Experimental procedure:

Antigen retrieval: Citrate buffer (pH 9.0), Medium high heat for 8 minutes, stop for 7 minutes, medium high heat for 8 minutes. Incubate antibody, 4°C overnight. Secondary antibody: Poly-HRP Goat Anti-Rabbit & Mouse Universal Secondary Antibody, RT, 1h.

### Images:



Sample: Human colon tissue, 4% PFA 12-24h

### Source of Reagents:

发表[中文论文]请标注:EPCAM(B32045R)由杭州浩克生物技术有限公司提供;

发表[英文论文]请标注:EPCAM(B32045R) were  
kindly provided by Hangzhou Haoke Biotechnology Co., Ltd.