

## Synaptophysin Recombinant antibody

**Cat:B32042R**
**Company:** Haokebio

**Uniprot ID:**P08247

**Applications:** IHC:1:100-1:200

**Organism:**Rabbit

IHC-Polymer:1:400-1:800

**Species reactivity:**Human

TSA:1:500-1:1000

### Background:

Syn (Synaptophysin), also known as the major synaptic vesicle protein p38, is a protein encoded by the SYP gene in humans. The exact function of this protein remains unclear; it interacts with fundamental synaptic vesicle proteins, yet when experimentally inactivated in animals, these proteins still exhibit normal expression and function. Syn reacts with neuroendocrine cells in the human adrenal medulla, carotid body, skin, pituitary gland, thyroid gland, lungs, pancreas, and gastrointestinal mucosa. This antibody recognizes normal neuroendocrine cells and neuroendocrine tumors. Syn is not co-expressed with other neural differentiation markers and can be used as a differential marker for tumor diagnosis.

### Protein full name:

synaptophysin

### Synonyms:

SYP, MRX96, SYN

### Immunogen:

Peptide

### Isotype:

IgG

### Subcellular location:

Cytoplasm

### Purity:

Affinity purification

### Form:

Liquid

### Storage Buffer:

PBS with 0.02% sodium azide, 100 µg/ml BSA and 50% glycerol.

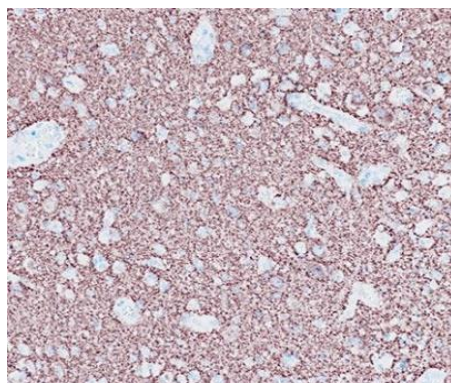
### Storage:

Store at -20 °C for one year.

### Experimental procedure:

Antigen retrieval: Citrate buffer (pH 9.0) , Medium high heat for 8 minutes, stop for 7 minutes, medium high heat for 8 minutes. Incubate antibody, 4°C overnight. Secondary antibody: Poly-HRP Goat Anti-Rabbit & Mouse Universal Secondary Antibody, RT, 1h.

### Images:



Sample: Human glioma tissue, 4% PFA 12-24h

### Source of Reagents:

发表[中文论文]请标注:Synaptophysin(B32042R)由杭州浩克生物技术有限公司提供;

发表[英文论文]请标注:Synaptophysin(B32042R) were kindly provided by Hangzhou Haoke Biotechnology Co., Ltd.