

Type I Cytokeratins Recombinant antibody

Cat:B32040R

Company: Haokebio

Organism:Rabbit

Applications: IHC:1:100-1:200

Species reactivity:Human

IHC-Polymer:1:400-1:800

TSA:1:500-1:1000

Background:

Keratin is a typical epithelial intermediate filament protein that exhibits notable molecular diversity. Heteropolymeric filaments are formed by the pairing of type I and type II molecules. There are 54 functional keratin genes in humans. They exhibit highly specific expression in epithelial cells and at the stages of cell differentiation. This antibody can detect high molecular weight (HMW) cytokeratins (CK), including CK10, CK14, CK15, and CK16, as well as low molecular weight (LMW) CK19. It is usually used in combination with type II cytokeratin antibodies to form a cytokeratin cocktail.

Protein full name:

Type I Cytokeratins

Synonyms:

Acidic Cytokeratins, Type I CKs

Immunogen:

Peptide

Isotype:

IgG

Subcellular location:

Cytoplasm

Purity:

Affinity purification

Form:

Liquid

Storage Buffer:

PBS with 0.02% sodium azide, 100 µg/ml BSA and 50% glycerol.

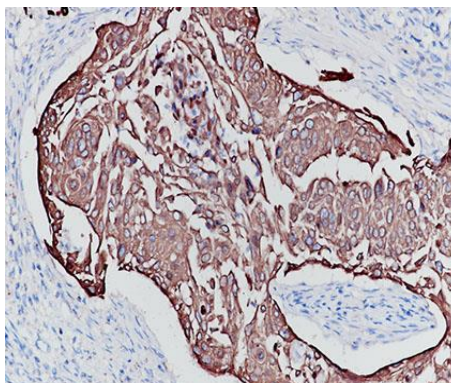
Storage:

Store at -20 °C for one year.

Experimental procedure:

Antigen retrieval: Citrate buffer (pH 9.0), Medium high heat for 8 minutes, stop for 7 minutes, medium high heat for 8 minutes. Incubate antibody, 4°C overnight. Secondary antibody: Poly-HRP Goat Anti-Rabbit & Mouse Universal Secondary Antibody, RT, 1h.

Images:



Sample: Human cervical cancer tissue, 4% PFA 12-24h

Source of Reagents:

发表[中文论文]请标注:Type I Cytokeratins(B32040R)由杭州浩克生物技术有限公司提供;

发表[英文论文]请标注:Type I Cytokeratins(B32040R) were kindly provided by Hangzhou Haoke Biotechnology Co., Ltd.