

CD23 Recombinant antibody

Cat:B32038R
Company: Haokebio

Uniprot ID:P06734

Applications: IHC:1:100-1:200

Organism:Rabbit

IHC-Polymer:1:400-1:800

Species reactivity:Human

TSA:1:500-1:1000

Background:

CD23 antigen is a transmembrane glycoprotein expressed in a variety of hematopoietic cells. It acts as a low-affinity receptor for IgE and is involved in regulating IgE production. CD23 is expressed in some mature B-cell lymphomas and Reed-Sternberg (R-S) cells of Hodgkin lymphoma. Follicular dendritic cells and activated B cells within germinal centers express CD23 densely, while B cells in the mantle zone show weaker staining. Most cases of chronic lymphocytic leukemia/small lymphocytic lymphoma (CLL/SLL) are CD23-positive, whereas mantle cell lymphoma (MCL) is usually CD23-negative. CD23 has been shown to help distinguish between small lymphocytic lymphoma (SLL) and mantle cell lymphoma (MCL).

Protein full name:

Fc fragment of IgE, low affinity II, receptor for (CD23)

Synonyms:

3H6B8, BLAST 2, BLAST-2, CD23A, CLEC4J

Immunogen:

Peptide

Isotype:

IgG

Subcellular location:

Cell membrane

Purity:

Affinity purification

Form:

Liquid

Storage Buffer:

PBS with 0.02% sodium azide, 100 µg/ml BSA and 50% glycerol.

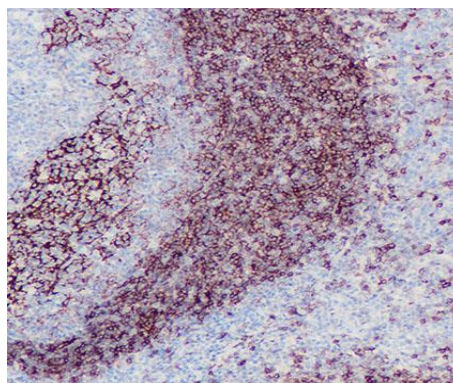
Storage:

Store at -20 °C for one year.

Experimental procedure:

Antigen retrieval: Citrate buffer (pH 9.0), Medium high heat for 8 minutes, stop for 7 minutes, medium high heat for 8 minutes. Incubate antibody, 4°C overnight. Secondary antibody: Poly-HRP Goat Anti-Rabbit & Mouse Universal Secondary Antibody, RT, 1h.

Images:



Sample: Human tonsil tissue, 4% PFA 12-24h

Source of Reagents:

发表[中文论文]请标注:CD23(B32038R)由杭州浩克生物技术有限公司提供;

发表[英文论文]请标注:CD23(B32038R) were kindly provided by Hangzhou Haoke Biotechnology Co., Ltd.