

PAX-2 Recombinant antibody

Cat:B32033R
Company: Haokebio

Uniprot ID: Q02962

Applications: IHC:1:100-1:200

Organism: Rabbit

IHC-Polymer:1:400-1:800

Species reactivity: Human

TSA:1:500-1:1000

Background:

PAX-2 is a member of the PAX transcription factor family, and together with PAX-8, it is involved in the formation of the kidney. In non-neoplastic tissues, PAX-2 is expressed in glomerular parietal epithelial cells, renal collecting duct cells, atrophic renal tubular cells, surface epithelial cells of the ovary, fallopian tubes, endocervix, and endometrium. In primary tumors, PAX-2 is mainly present in renal cell carcinoma and nephrogenic tumors. Recent studies have shown that PAX-2 can serve as an effective immunohistochemical marker, which aids in the diagnosis of renal epithelial tumors and some gynecological tumors.

Protein full name:

paired box 2

Synonyms:

paired box 2, Paired box protein Pax 2, PAX2

Immunogen:

Peptide

Isotype:

IgG

Subcellular location:

Nucleus

Purity:

Affinity purification

Form:

Liquid

Storage Buffer:

PBS with 0.02% sodium azide, 100 µg/ml BSA and 50% glycerol.

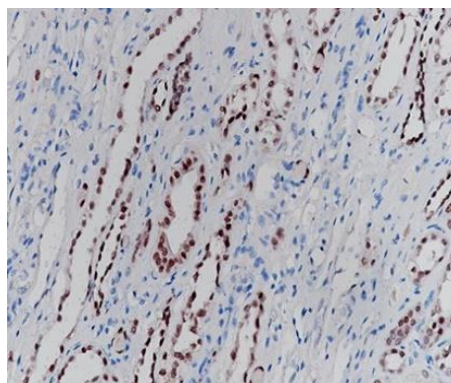
Storage:

Store at -20 °C for one year.

Experimental procedure:

Antigen retrieval: Citrate buffer (pH 9.0), Medium high heat for 8 minutes, stop for 7 minutes, medium high heat for 8 minutes. Incubate antibody, 4°C overnight. Secondary antibody: Poly-HRP Goat Anti-Rabbit & Mouse Universal Secondary Antibody, RT, 1h.

Images:



Sample: Human kidney tissue, 4% PFA 12-24h

Source of Reagents:

发表[中文论文]请标注:PAX-2(B32033R)由杭州浩克生物技术有限公司提供;

发表[英文论文]请标注:PAX-2(B32033R) were kindly provided by Hangzhou Haoke Biotechnology Co., Ltd.