

p40 Recombinant antibody

Cat:B32023R
Company: Haokebio

Uniprot ID: Q9H3D4-2

Applications: IHC:1:100-1:200

Organism: Rabbit

IHC-Polymer:1:400-1:800

Species reactivity: Human

TSA:1:500-1:1000

Background:

p40 is a subtype of the p63 protein, and it is typically expressed in the basal cell layer or progenitor cell layer of stratified epithelial tissues (e.g., squamous epithelium, urothelium, bronchial epithelium), basal cells of certain glandular epithelia (e.g., prostate), myoepithelial cells of the mammary gland and salivary gland, trophoblasts, and thymic epithelial cells. In tumor tissues, p40 is specifically expressed in squamous cell carcinomas but rarely expressed in lung adenocarcinomas. While its sensitivity for lung squamous cell carcinoma is similar to that of p63, its specificity is significantly higher than that of p63. Thus, p40 can be used for the differential diagnosis of lung squamous cell carcinoma and lung adenocarcinoma.

Protein full name:

Rab9 effector protein with kelch motifs

Synonyms:

p40, RABEPK, RAB9P40, Rab9 effector protein with kelch motifs, 40 kDa Rab9 effector protein

Immunogen:

Peptide

Isotype:

IgG

Subcellular location:

Nucleus

Purity:

Affinity purification

Form:

Liquid

Storage Buffer:

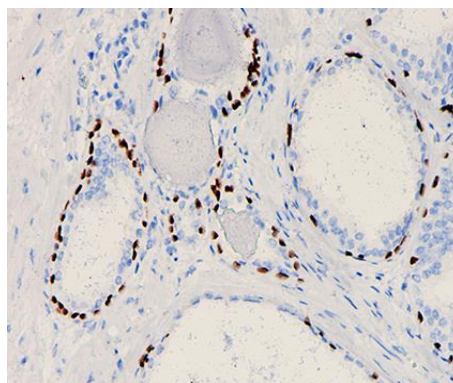
PBS with 0.02% sodium azide, 100 µg/ml BSA and 50% glycerol.

Storage:

Store at -20 °C for one year.

Experimental procedure:

Antigen retrieval: Citrate buffer (pH 9.0), Medium high heat for 8 minutes, stop for 7 minutes, medium high heat for 8 minutes. Incubate antibody, 4°C overnight. Secondary antibody: Poly-HRP Goat Anti-Rabbit & Mouse Universal Secondary Antibody, RT, 1h.

Images:


Sample: Human prostate tissue, 4% PFA 12-24h

Source of Reagents:

发表[中文论文]请标注:p40(B32023R)由杭州浩克生物技术有限公司提供;

发表[英文论文]请标注:p40(B32023R) were kindly provided by Hangzhou Haoke Biotechnology Co., Ltd.