

DOG1 Recombinant antibody

Cat:B32022R
Company: Haokebio

Uniprot ID: Q5XXA6

Applications: IHC:1:100-1:200

Organism: Rabbit

IHC-Polymer:1:400-1:800

Species reactivity: Human

TSA:1:500-1:1000

Background:

DOG1 is a calcium-dependent chloride channel protein encoded by the TMEM16A gene, and it is localized on chromosome 11q13. DOG1 functions in regulating the cholinergic activity of gastrointestinal smooth muscle, as well as in maintaining cell survival and promoting cell proliferation. Over 90% of gastrointestinal stromal tumors (GISTs) are DOG1-positive, with staining localized to the cytoplasm and cell membrane, presenting as diffuse, dense, and strong staining. DOG1 and CD117 serve as important indicators in the identification of GISTs, and DOG1 shows higher sensitivity and specificity than CD117. Additionally, DOG1 is also used in the identification of salivary gland carcinoma, pancreatic carcinoma, and renal carcinoma.

Protein full name:

anoctamin 1, calcium activated chloride channel

Synonyms:

ANO1, Anoctamin 1, Anoctamin-1, Discovered on gastrointestinal stromal tumors protein 1, DOG1

Immunogen:

Peptide

Isotype:

IgG

Subcellular location:

Cytoplasm, Cell membrane

Purity:

Affinity purification

Form:

Liquid

Storage Buffer:

PBS with 0.02% sodium azide, 100 µg/ml BSA and 50% glycerol.

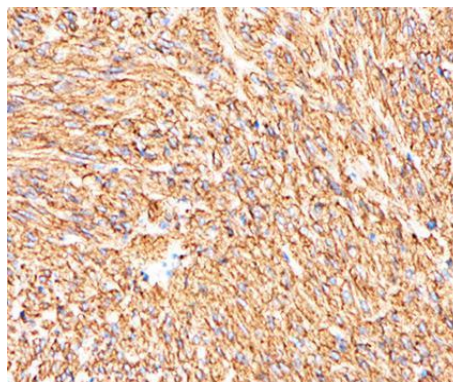
Storage:

Store at -20 °C for one year.

Experimental procedure:

Antigen retrieval: Citrate buffer (pH 9.0), Medium high heat for 8 minutes, stop for 7 minutes, medium high heat for 8 minutes. Incubate antibody, 4°C overnight. Secondary antibody: Poly-HRP Goat Anti-Rabbit & Mouse Universal Secondary Antibody, RT, 1h.

Images:



Sample: Human Extraintestinal stromal tumor tissue, 4% PFA 12-24h

Source of Reagents:

发表[中文论文]请标注:DOG1(B32022R)由杭州浩克生物技术有限公司提供;

发表[英文论文]请标注:DOG1(B32022R) were kindly provided by Hangzhou Haoke Biotechnology Co., Ltd.