

## Cytokeratin 20 Recombinant antibody

**Cat:**B32020R

**Company:** Haokebio

**Uniprot ID:**P35900

**Applications:** IHC:1:100-1:200

**Organism:**Rabbit

IHC-Polymer:1:400-1:800

**Species reactivity:**Human

TSA:1:500-1:1000

### Background:

CK20 is a simple epithelial keratin with a restricted expression pattern, and its typical type II pairing is usually CK8. In normal tissues, CK20 is expressed in gastric foveolar epithelium, epithelium of the small and large colon, bladder epithelium, some neuroendocrine cells, and Merkel cells. In tumor tissues, CK20 is expressed in colorectal adenocarcinoma, gastric adenocarcinoma, pancreatic adenocarcinoma, cholangiocarcinoma, ovarian mucinous adenocarcinoma, urothelial carcinoma, and Merkel cell carcinoma. CK20 is often expressed in combination with CK7 and other antibodies, which is used to distinguish between colorectal cancer (CK20+) and ovarian cancer, lung cancer, and breast cancer.

### Protein full name:

keratin 20

### Synonyms:

KRT20, keratin 20, K20, Cytokeratin-20, CK-20

### Immunogen:

Peptide

### Isotype:

IgG

### Subcellular location:

Cytoplasm

### Purity:

Affinity purification

### Form:

Liquid

### Storage Buffer:

PBS with 0.02% sodium azide, 100 µg/ml BSA and 50% glycerol.

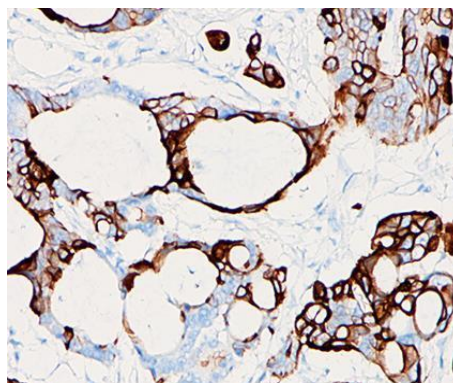
### Storage:

Store at -20 °C for one year.

### Experimental procedure:

Antigen retrieval: Citrate buffer (pH 9.0) , Medium high heat for 8 minutes, stop for 7 minutes, medium high heat for 8 minutes. Incubate antibody, 4°C overnight. Secondary antibody: Poly-HRP Goat Anti-Rabbit & Mouse Universal Secondary Antibody, RT, 1h.

### Images:



Sample: Human Adenocarcinoma of colon tissue, 4% PFA 12-24h

### Source of Reagents:

发表[中文论文]请标注:Cytokeratin 20(B32020R)由杭州浩克生物技术有限公司提供;

发表[英文论文]请标注:Cytokeratin 20(B32020R) were kindly provided by Hangzhou Haoke Biotechnology Co., Ltd.