

CA125 Recombinant antibody

Cat:B32008R
Company: Haokebio

Uniprot ID:Q8WXI7

Applications: IHC:1:100-1:200

Organism:Rabbit

IHC-Polymer:1:400-1:800

Species reactivity:Human

TSA:1:500-1:1000

Background:

CA125 (Cancer Antigen 125, Carcinoma Antigen 125, or Carbohydrate Antigen 125), also known as mucin 16, is a member of the mucin family of glycoproteins. CA125 is a component of the epithelium of the ocular surface (including the cornea and conjunctiva), respiratory tract, and female genital tract. Due to its high degree of glycosylation, CA125 creates a hydrophilic environment that acts as a lubricating barrier against foreign particles and infectious pathogens located on the apical membrane of epithelial cells. CA125 reacts with both normal tissues and tumors of the fallopian tubes, endometrium, endocervix, and mesotheliomas. It does not react with colorectal cancer. Normal tissues such as the breast, liver, skin, kidneys, and spleen are also negative for CA125 expression. Studies have shown that CA125 reacts with approximately 80% of serous, endometrioid, clear cell, and undifferentiated subtypes of epithelial ovarian tumors. It shows no reactivity with mucinous ovarian tumors, germ cell tumors, or hematopoietic tumors. This antibody serves as a useful auxiliary tool for classifying various tumors, including some colorectal adenocarcinomas, breast cancers, malignant mesotheliomas, adenomatoid tumors of the uterus, bronchioloalveolar carcinoma of the lung, as well as ovarian endometrioid and serous carcinomas.

Protein full name:

mucin 16, cell surface associated

Synonyms:

MUC16, MUC16, CA125, MUC-16, MUC 16, CA125

Immunogen:

Peptide

Isotype:

IgG

Subcellular location:

Cell membrane

Purity:

Affinity purification

Form:

Liquid

Storage Buffer:

PBS with 0.02% sodium azide, 100 µg/ml BSA and 50% glycerol.

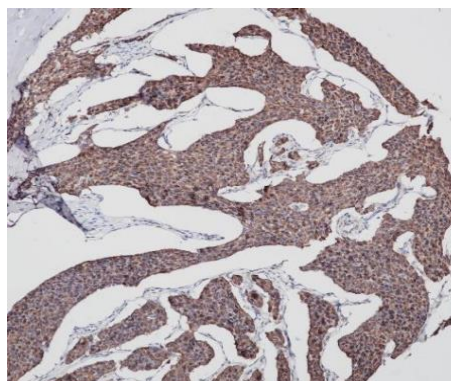
Storage:

Store at -20 °C for one year.

Experimental procedure:

Antigen retrieval: Citrate buffer (pH 9.0), Medium high heat for 8 minutes, stop for 7 minutes, medium high heat for 8 minutes. Incubate antibody, 4°C overnight. Secondary antibody: Poly-HRP Goat Anti-Rabbit & Mouse Universal Secondary Antibody, RT, 1h.

Images:



Sample: Human breast cancer tissue, 4% PFA 12-24h

Source of Reagents:

发表[中文论文]请标注:CA125(B32008R)由杭州浩克生物技术有限公司提供;

发表[英文论文]请标注:CA125(B32008R) were
kindly provided by Hangzhou Haoke Biotechnology Co., Ltd.