

MSH6 Recombinant antibody

Cat:B32004R
Company: Haokebio

Uniprot ID: P52701

Applications: IHC:1:100-1:200

Organism: Rabbit

IHC-Polymer:1:400-1:800

Species reactivity: Human

TSA:1:500-1:1000

Background:

MSH6 is a mismatch repair protein, and a high proportion of patients with high microsatellite instability (MSI-H) have defects in this protein. Studies have shown that defects in DNA mismatch repair proteins can be observed in several malignant tumors, such as hereditary nonpolyposis colorectal cancer (HNPCC) and endometrial cancer. MSH6 is expressed in all proliferating cells and is involved in repairing base-pair mismatches that occur during DNA replication. Loss of MSH6 expression leads to the accumulation of DNA replication errors in proliferating cells, particularly in regions of the genome with short repetitive nucleotide sequences—a phenomenon known as microsatellite instability (MSI). MSH6 is typically used in conjunction with MLH1, MSH2, and PMS2, and this combination may help identify the genes most likely responsible for MSI.

Protein full name:

mutS homolog 6

Synonyms:

hMSH6, GTMBP, GTBP, G/T mismatch-binding protein, G/T mismatch binding protein

Immunogen:

Peptide

Isotype:

IgG

Subcellular location:

Nucleus

Purity:

Affinity purification

Form:

Liquid

Storage Buffer:

PBS with 0.02% sodium azide, 100 µg/ml BSA and 50% glycerol.

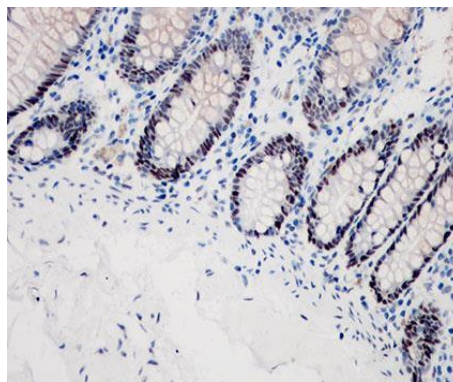
Storage:

Store at -20 °C for one year.

Experimental procedure:

Antigen retrieval: Citrate buffer (pH 9.0), Medium high heat for 8 minutes, stop for 7 minutes, medium high heat for 8 minutes. Incubate antibody, 4°C overnight. Secondary antibody: Poly-HRP Goat Anti-Rabbit & Mouse Universal Secondary Antibody, RT, 1h.

Images:



Sample: Human colon tissue, 4% PFA 12-24h

Source of Reagents:

发表[中文论文]请标注:MSH6(B32004R)由杭州浩克生物技术有限公司提供;

发表[英文论文]请标注:MSH6(B32004R) were kindly provided by Hangzhou Haoke Biotechnology Co., Ltd.