

Cytokeratin 8 Recombinant antibody

Cat:B32002R

Company: Haokebio

Uniprot ID:P05787

Applications: IHC:1:100-1:200

Organism:Rabbit

IHC-Polymer:1:400-1:800

Species reactivity:Human

TSA:1:500-1:1000

Background:

Cytokeratin 8 (CK8) is a member of the type II intermediate filament (IF) gene family. Most CK8 molecules in cells co-assemble with their partner, CK18, into highly insoluble 10-nanometer filaments, which extend from the cell nucleus to the inner leaflet of the cytoplasmic membrane. CK8 is consistently expressed by simple epithelial cells and some cancer cells. In non-cancerous tissues, CK8 is typically expressed in normal glandular epithelium, transitional epithelium, and hepatocytes. In cancerous tissues, CK8 tends to be highly expressed in adenocarcinomas (such as human breast cancer or colorectal cancer).

Protein full name:

keratin 8

Synonyms:

KRT8, CARD2, CK 8, CK8, CK-8

Immunogen:

Peptide

Isotype:

IgG

Subcellular location:

Cytoplasm

Purity:

Affinity purification

Form:

Liquid

Storage Buffer:

PBS with 0.02% sodium azide, 100 µg/ml BSA and 50% glycerol.

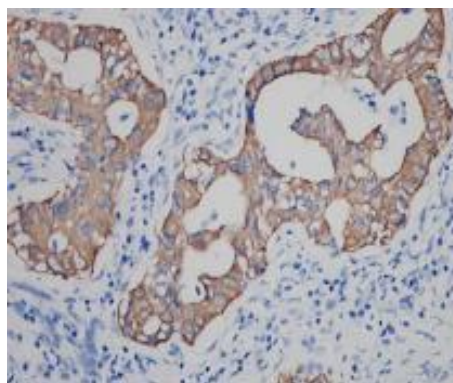
Storage:

Store at -20 °C for one year.

Experimental procedure:

Antigen retrieval: Citrate buffer (pH 9.0), Medium high heat for 8 minutes, stop for 7 minutes, medium high heat for 8 minutes. Incubate antibody, 4°C overnight. Secondary antibody: Poly-HRP Goat Anti-Rabbit & Mouse Universal Secondary Antibody, RT, 1h.

Images:



Sample: Human lung adenocarcinoma tissue, 4% PFA 12-24h

Source of Reagents:

发表[中文论文]请标注:Cytokeratin 8(B32002R)由杭州浩克生物技术有限公司提供;

发表[英文论文]请标注:Cytokeratin 8(B32002R) were kindly provided by Hangzhou Haoke Biotechnology Co., Ltd.